

THIS DOCUMENT CONTAINS PROPRIETARY INFORMATION AND SUCH INFORMATION
MAY NOT BE DISCLOSED TO OTHERS FOR ANY PURPOSE OR USED FOR MANUFACTURING
PURPOSES WITHOUT WRITTEN PERMISSION FROM AMPHENOL CANADA CORP.

2=.120[3.05] DIA THROUGH HOLE
3=#4-40 UNC SELF-LOCKING THREAD
4=#4-40 UNC THREAD
5=#4-40 UNC THREADED STANDOFF
6=M3 x 0.5 THREAD
9=STANDOFF WITH BOARDLOCK & #4-40
THREADED JACK SOCKETS INSTALLED
A=#4-40 THREADED STANDOFF WITH BOARDLOCK
E=CODE 4 MOUNTING WITH #4-40 UNC HEX JACK
SOCKETS SUPPLIED
J=M3 x 0.5 THREADED STANDOFF WITH BOARDLOCK

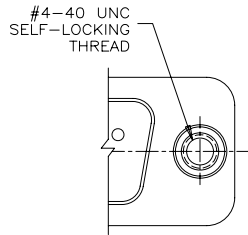
6. TOLERANCE UNLESS INDICATED OTHERWISE: ± 0.005 [0.13]

DRAWN <i>K. LAMBIE</i>	DATE MAY13/05
DESIGNED	
CHECKED	
I. E. APPRD.	
Q. A. APPRD.	
DWG. APPRD.	
ENG. REL. NO.	
REF. <i>EAR #12744</i>	
DIMENSIONS ARE IN INCHES [mm]	CODE ID. NO. 03554

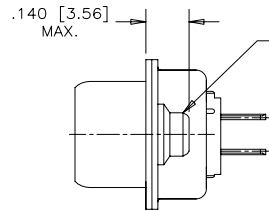
DWG C	DRAWING NO. P-FCE17-XXXXE-XXOX				REV. D
SCALE 3/1	WT -----	SURE -----	SHEET 1 OF 2		

REVISIONS			
REV	ECN, ERN NO.	DATE	APPRD.
D	PRODUCT DRAWING (EAR 13733)	JUN23/10	K.L.

ADDITIONAL MOUNTING OPTIONS AVAILABLE
FOR PIN OR SOCKET CONNECTOR

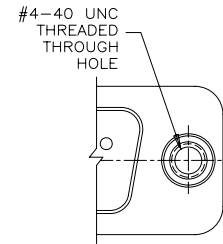


PARTIAL FRONT VIEW

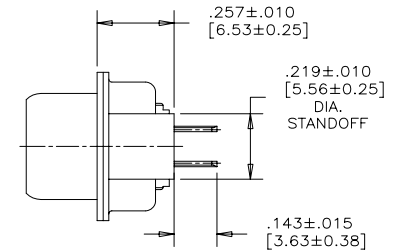


END VIEW

VIEW FOR E09, A15 & B25
SIZE. FOR C37 SIZE VIEW
SEE MOUNTING CODE 4, SHEET 1.



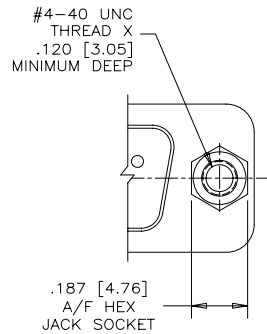
PARTIAL FRONT VIEW



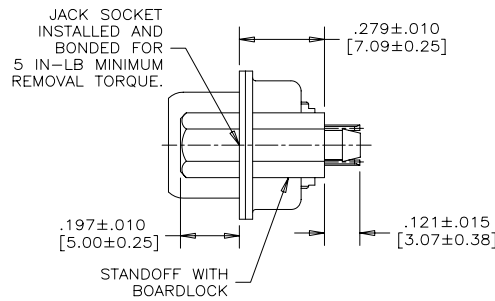
END VIEW

MOUNTING CODE 3

MOUNTING CODE 5



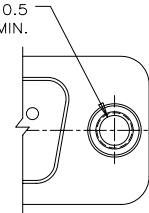
PARTIAL FRONT VIEW



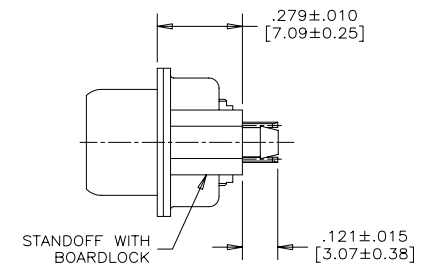
END VIEW

MOUNTING CODE 9

MOUNTING CODE A - #4-40 UNC
MOUNTING CODE J - M3 x 0.5
THREAD DEPTH .220 [5.59] MIN.



PARTIAL FRONT VIEW



END VIEW

MOUNTING CODES A & J



THIS DOCUMENT CONTAINS PROPRIETARY INFORMATION AND SUCH INFORMATION
MAY NOT BE DISCLOSED TO OTHERS FOR ANY PURPOSE OR USED FOR MANUFACTURING
PURPOSES WITHOUT WRITTEN PERMISSION FROM AMPHENOL CANADA CORP.

DRAWN K. LAMBIE	DATE MAY13/05	Amphenol Canada Corp.	
DESIGNED		TITLE FCE17 SERIES FILTERED D-SUB CONNECTOR, PIN & SOCKET, VERTICAL MOUNT PCB TAIL, VARIOUS MOUNTING OPTIONS, RoHS COMPLIANT	
CHECKED			
I. E. APPRD.			
Q. A. APPRD.			
DWG. APPRD.			
ENG. REL. NO.		DWG C	REV. D
REF. EAR #12744		DRAWING NO. P-FCE17-XXXXE-XX0X	
DIMENSIONS ARE IN INCHES [mm]	CODE ID. NO. 03554	SCALE 3/1	WT. SURF. SHEET 2 OF 2