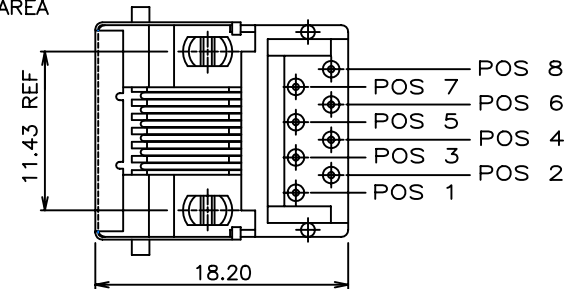
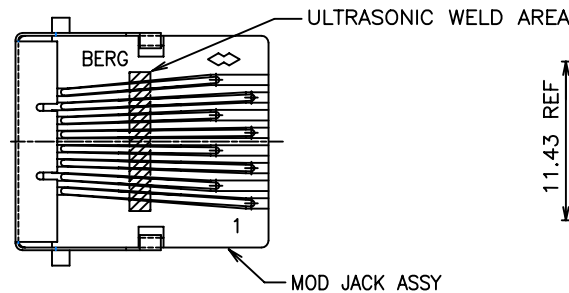


| PRODUCT NO | NUMBER OF POS. | LOADED POSITION | MOD JACK ASSY |
|--------------|----------------|-----------------|---------------|
| 94909-X88 | 8 | ALL POS. | 94908-X88 |
| 94909-X86 | | 2,3,4,5,6,7 | 94908-X86 |
| 94909-X84 | | 3,4,5,6 | 94908-X84 |
| 94909-X84A | | 1,2,3,6 | 94908-X84A |
| 94909-X88LF | | ALL POS. | 94908-X88LF |
| 94909-X86LF | | 2,3,4,5,6,7 | 94908-X86LF |
| 94909-X84LF | | 3,4,5,6 | 94908-X84LF |
| 94909-X84ALF | | 1,2,3,6 | 94908-X84ALF |
| 94909-X88NLF | | ALL POS. | 94908-X88LF |

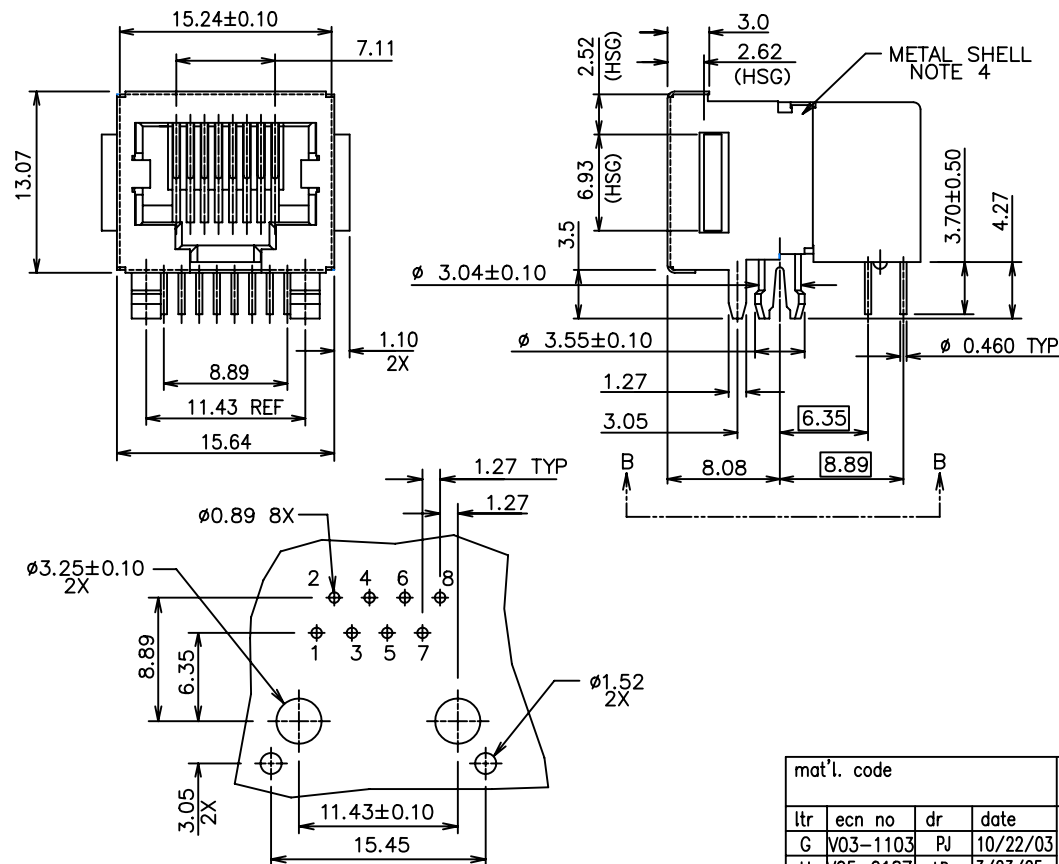
NOTES: PLEASE CHECK FOR AVAILABILITY,
NOT ALL OPTIONS AVAILABLE.



VIEW B-B

| POS. | NO. | CONFIGURATION |
|------|-----|---------------|
|------|-----|---------------|


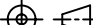


| PLATING CODE X | PLATING |
|----------------|-------------|
| 0 | 30u" G.X.T. |
| 1 | 15u" GOLD |
| 2 | 20u" GFPD |
| 3 | 30u" GOLD |
| 5 | 50u" GOLD |



P. C. B. HOLE PATTERN VIEWED FROM TOP.

NOTES:

1. RECOMMENDED P.C.B THICKNESS 1.60 MM
2. HOUSING MAT'L: NYLON 66, 25% GLASS REINFORCED.
3. CONTACTS: PHOS BRONZE ALLOY UNS-C51000,
Ø 0.460 ROUND WIRE, SEE TABLE FOR PLATING.
- ④ 4. METAL SHELL MATERIAL:
JIS C7521R-H OR THE EQUIVALENT, 0.2MM THICK.
5. PACKAGING PER GES-14-361, USING TUBE.
6. COMPANY LOGO LOCATED IN THIS AREA.
7. LEAD FREE PRODUCTS MEET EUROPEAN UNION
DIRECTIVES AND OTHER COUNTRY REGULATIONS AS
DESCRIBED IN GS-22-008.
8. FOR P/N -X88NLF: 30"u NI MIN, WITH SELECTICE TIN
ON SOLDER TAILS.
- ⑨ 9. EQUIVALENT THICKNESS Au AND GXT PLATING HAVE SAME
FUNCTION AND THEY ARE ALTERNATIVE BY THE CUSTOEMR.

| | | | | | | | | | | | |
|----------------|-------------------|----|----------|--|------------|--------|---|---|---|--------|-----|
| mat'l. code | | | | tolerances unless otherwise specified | | | CUSTOMER COPY | |  www.fciconnect.com | | |
| litr | ecn no | dr | date | linear | .X±.3 | | projection  | title MODIFIED LOW PROFILE PCB III 8 POS SHIELDED MOD JACK | | | |
| G | V03-1103 | PJ | 10/22/03 | | .XX±.13 | | | | | | |
| H | V05-0187 | LP | 3/23/05 | | .XXX±.051 | | | | | | |
| J | N08-0202 | SH | 09/16/08 | angles | 0±.2 | |  scale 1:1 | product family MOD JACK | | code | |
| K | N08-0097 | | 09/25/08 | dr | DKLIN | 7/5/94 | |  MM | size dwg no | | 210 |
| | | | | engr | TONY CHIEN | 7/5/94 | | | A | 94909 | |
| | | | | chr | TONY CHIEN | 7/5/94 | | | | 1 of 1 | |
| | | | | appd | JENN TSAO | 7/5/94 | | | | | |
| sheet index | revision sheet | | | | | | | | | | |