

7334L2622F01LF

Catalogue Part Number Key

Lead Free Version (Optional)

Durability
0: 2500 Mating Cycles
2: 10000 Mating Cycles
5: 100000 Mating Cycles

Number of contacts :
2: 8 contacts ISO
3: 16 contacts ISO + AFNOR

GENERAL:

This L26 connector uses a "sliding" contact technology suitable for most applications.
It has been designed for easy mounting on the PCB.

ELECTRICAL PROPERTIES:

Insulation resistance : 5000 M Ω min
Dielectric withstanding : 750 Vrms min
Current carrying capacity : 10 μ A min. 1A max
Contact resistance : 100m Ω max
Card sensor type : Normally closed

MECHANICAL PROPERTIES:

Contact Normal force : 0.6 N max (EMV Standard)
Insertion force : 10 N max
Extraction force : 1 N min
Durability : 10000 card insertions with 0.4 μ m Gold
According to UTE C93-421

MATERIAL:

Housing : Thermoplastic 30 % Glass Filled, Colour Black, Rated UL94V0
Contacts and switch : Phosphor bronze
Plating : Nickel all over with 3 μ m mini on contact area
Gold over Nickel on contact area
Tin/Lead 3 μ m mini on soldertails

FOR LEAD FREE PLATING :

Matte Tin 3 μ m mini on solder tail in place of Tin/Lead
Bare edge allowed

ENVIRONMENT:

Operating temperature: -20°C / +70°C
Storage temperature: -40°C / +85°C
Printed Circuit Board thickness : 1.6mm

REFERENCE DOCUMENTS:


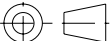


Product specification VGN 11596
Packaging Specification VGN 11619

LEAD FREE VERSION:

"This product meets European Union Directives and other country regulations as described in GS-22-008"

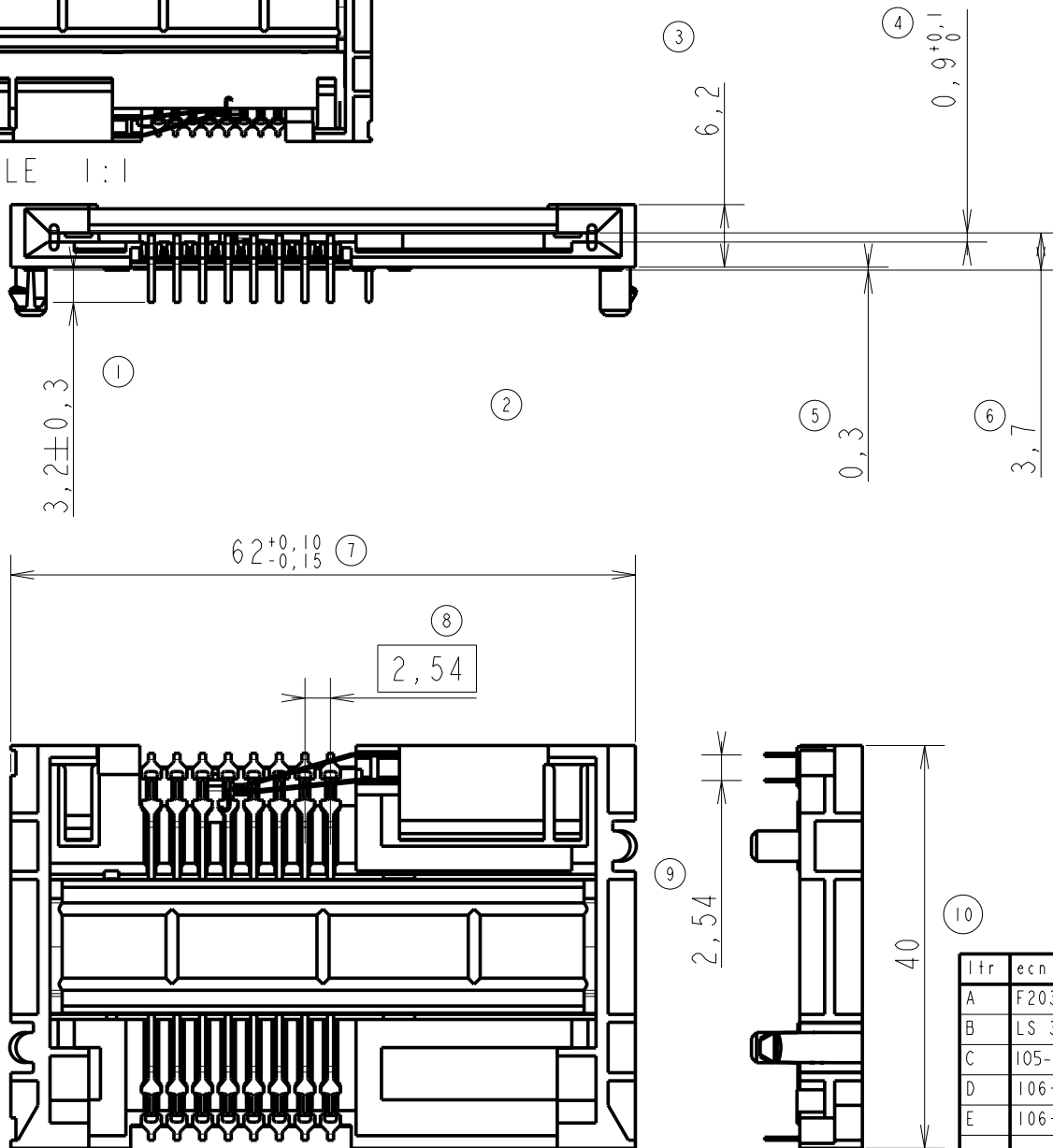
The housing will withstand exposure to 260°C peak temperature for 10seconds in a wave solder application with a 1.6mm minimum thick circuit board.
Use protective adhesive tape (Kapton orTeflon) or protective metallic devices on the areas which are directly exposed to wave soldering as it is used in classical leaded wave soldering

General Tolerances: ± 0.2 mm

www.fciconnect.com			surface - 		tolerance std ISO 1302 ISO 406 ISO 1101		projection 			
			TOLERANCES UNLESS OTHERWISE SPECIFIED							
Dr	N.TWENCY	2002/04/30	ANGULAR	LINEAR	0.X	±	size A3	Scale 3:2		
Eng	F TISSERAND	2002/04/30			0.XX	±				
Chr	DILIPTHOMAS	2006/10/05			0.XXX	±				
Appr	K.V.SIVADAS	2006/10/05	Product family			5S2F	Spec ref		SEE NOTES	
			title L26 TYPE F01				dwg no VJW_54701		Rev E	
			catalog no SEE TABLE				-		sheet 1 of 2	

litr	ecn no	dr	date
A	F20307	DLE	2002/04/30
B	LS 3053	JTA	2003/05/13
C	105-0071	DTK	2005/06/25
D	106-0084	SSC	2006/06/21
E	106-0183	SSC	2006/10/05
-	-	-	-
-	-	-	-

SCALE 1:1



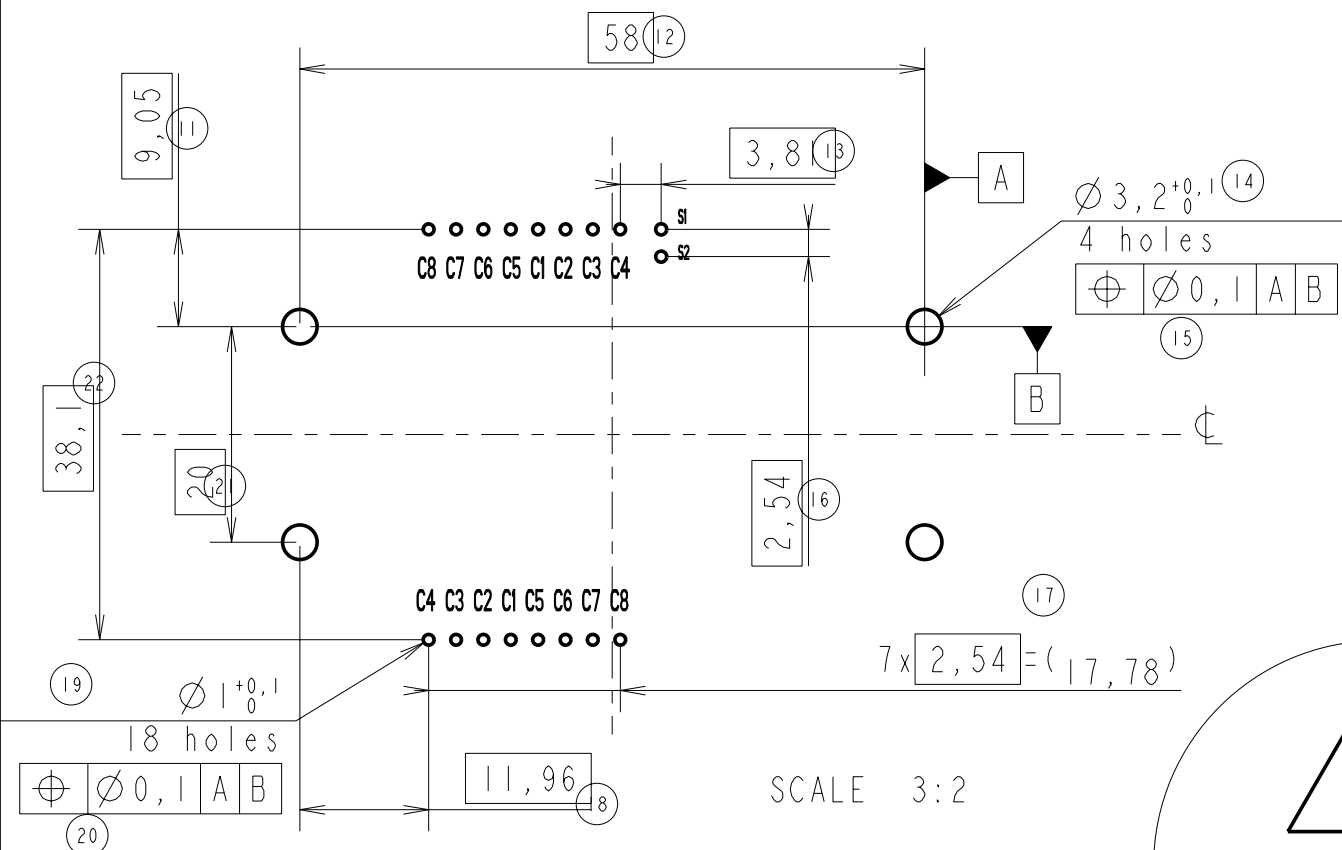
Copyright FCI.



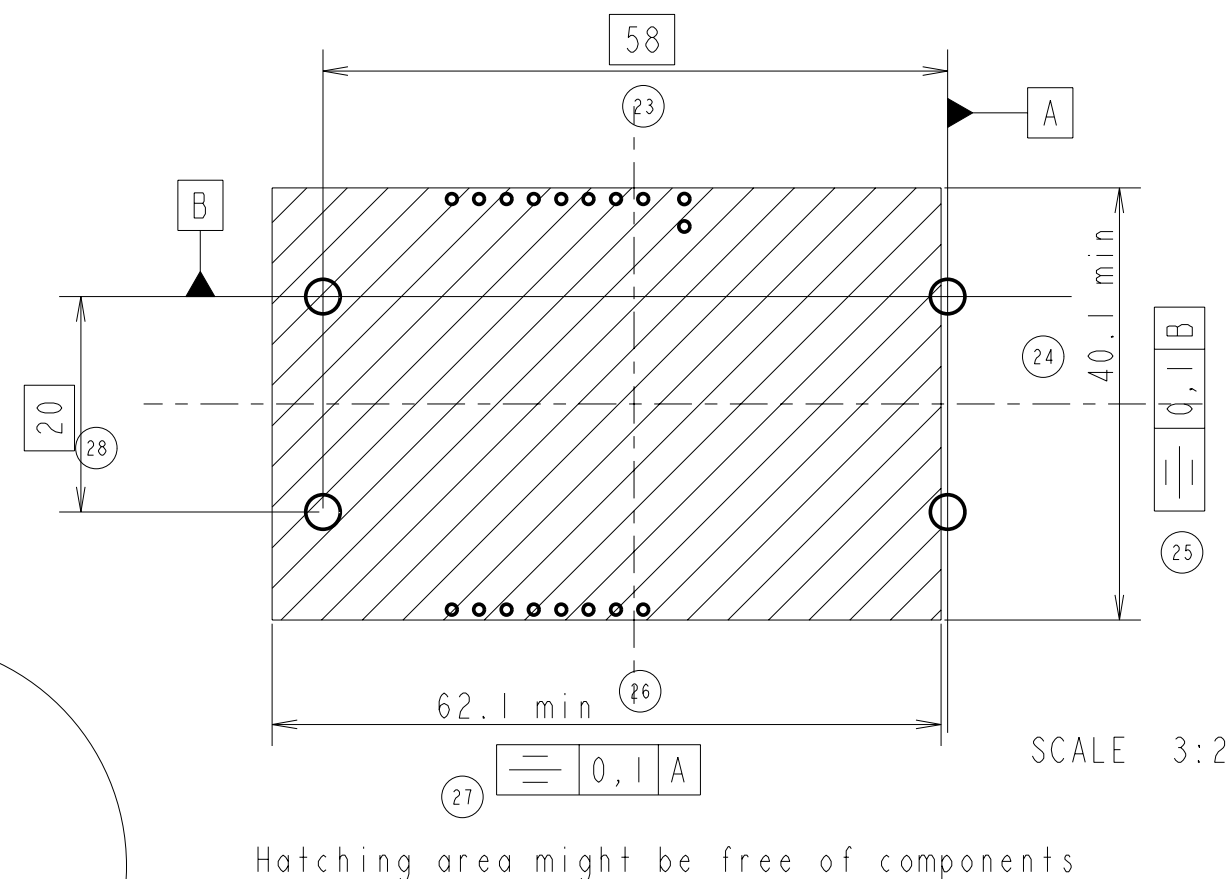
Copyright FCI.

RECOMMENDED PCB LAYOUT

CONTACT CONFIGURATION : ISO & AFNOR
(CONNECTOR SIDE)

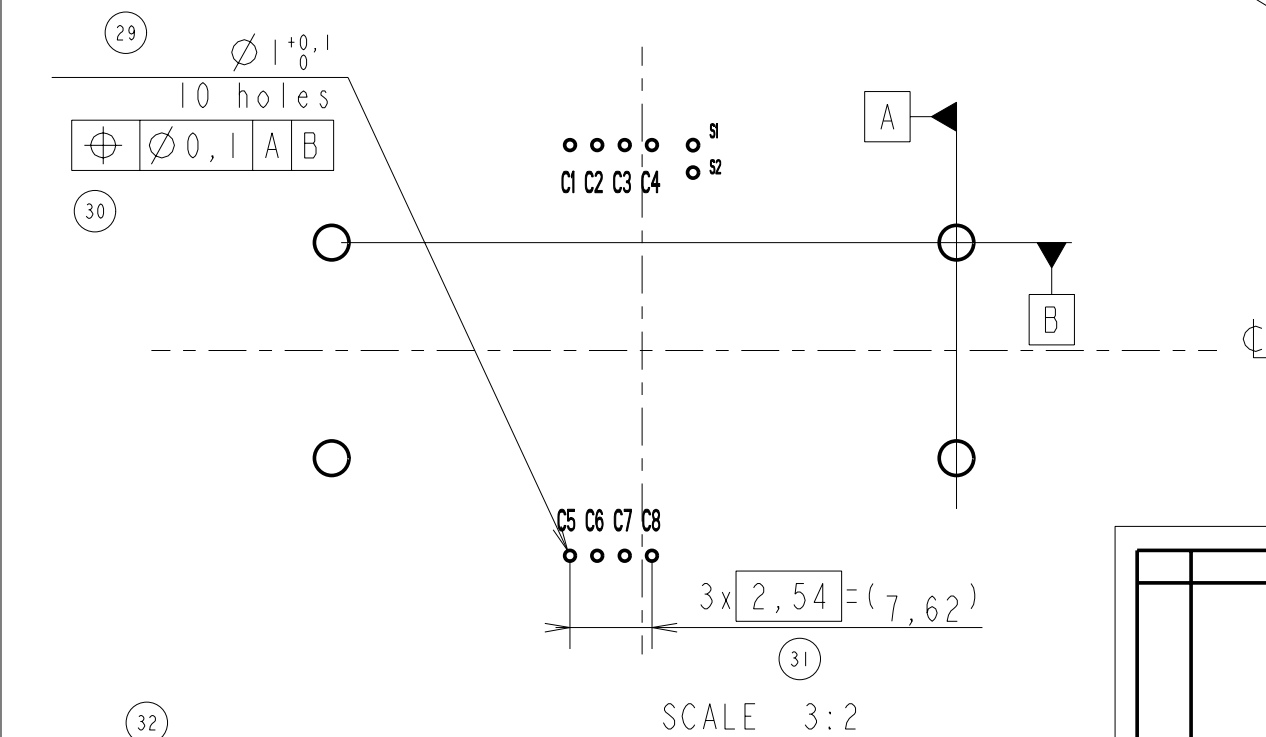


STANDARD LAYOUT FOR 'KEEP OUT ZONE' (Connector Side)

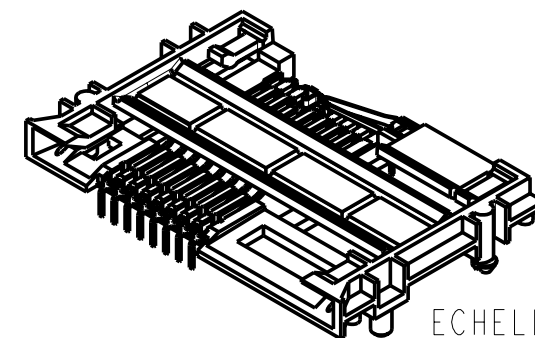


RECOMMENDED PCB LAYOUT

CONTACT CONFIGURATION : ISO
(CONNECTOR SIDE)



CARD
INSERTION



ECHELLE 1:1

EUROPEAN PROJECTION

www.fciconnect.com			surface - <input checked="" type="checkbox"/> ISO 1302	tolerance std ISO 406 ISO 1101	projection	mm
			TOLERANCES UNLESS OTHERWISE SPECIFIED			
Dr	N.TWENCY	2002/04/30	ANGULAR	0.X	±	size A3
Eng	F TISSERAND	2002/04/30		0.XX	±	
Chr	DILIPTHOMAS	2006/10/05	0° ±°	0.XXX	±	ECN 106-0183
Appr	K.V.SIVADAS	2006/10/05	Product family		5S2F	Spec ref SEE NOTES
FCI			L26 TYPE F01			Rev. E
catalog no			SEE TABLE			sheet 2 of 2