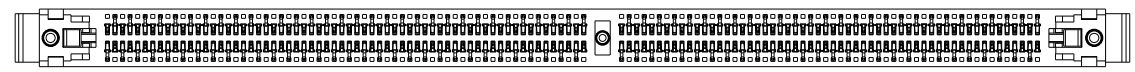
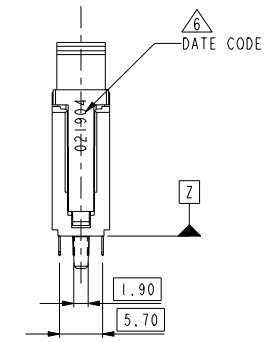
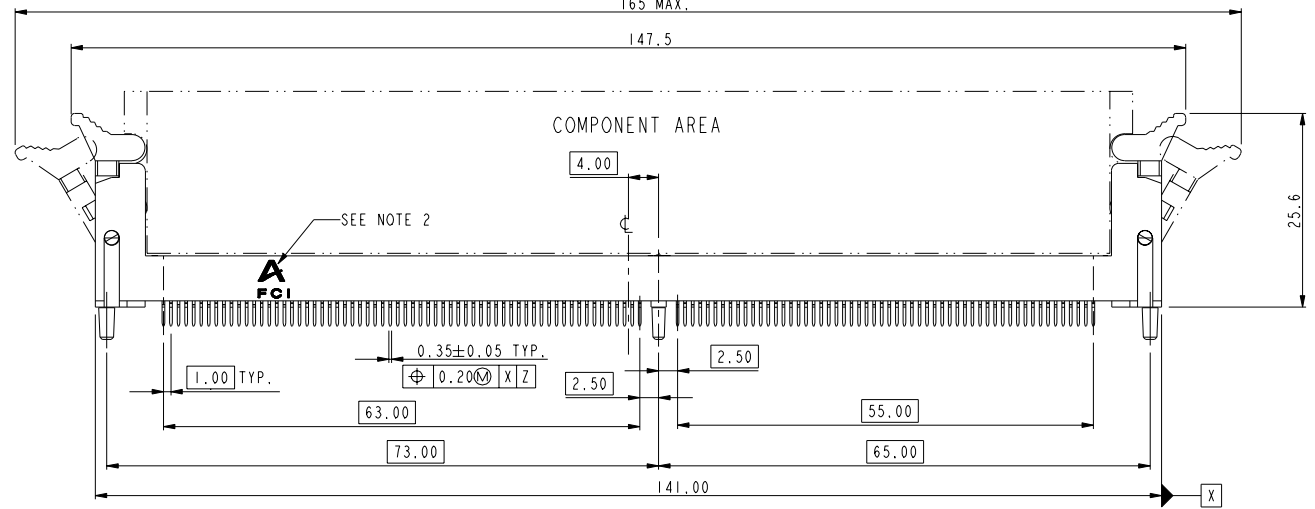
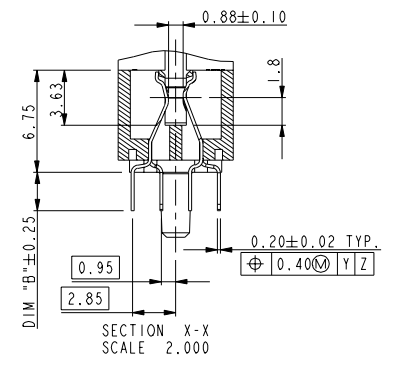
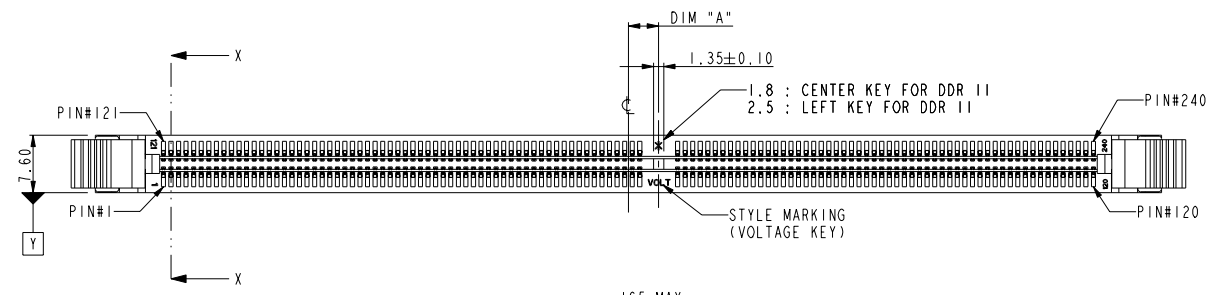


FCI CONFIDENTIAL



This document is the property of and embodies CONFIDENTIAL and PROPRIETARY information of FCI. No part of the information shown on this document may be used in any way or disclosed to others without the written consent of FCI. Copyright FCI.

PRODUCT NO.  
10023061-XXXX



PART NO.	DIM "A"	DESCRIPTION
10023061-1****	4.00	1.8V
10023061-2****	3.00	2.5V
10023061-3****	5.00	X.XV

Mark with  
10023061  
REV.  
in area indicated  
by X.

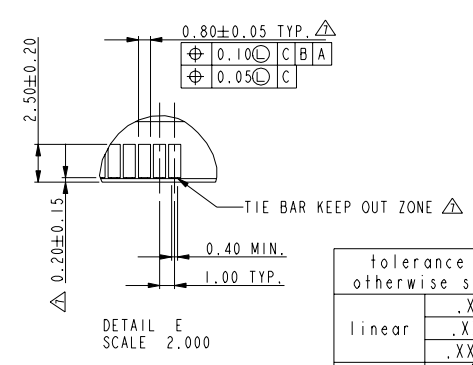
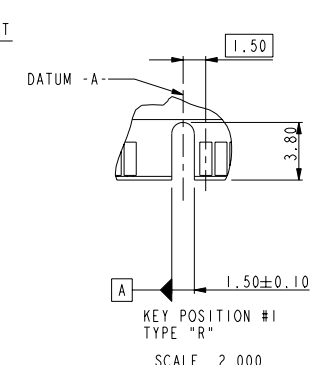
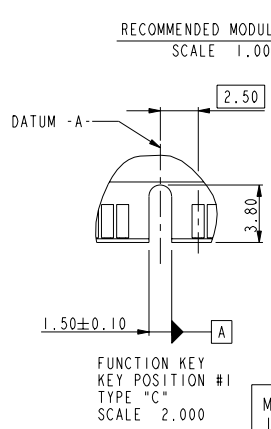
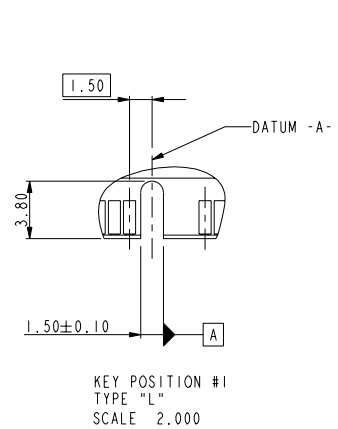
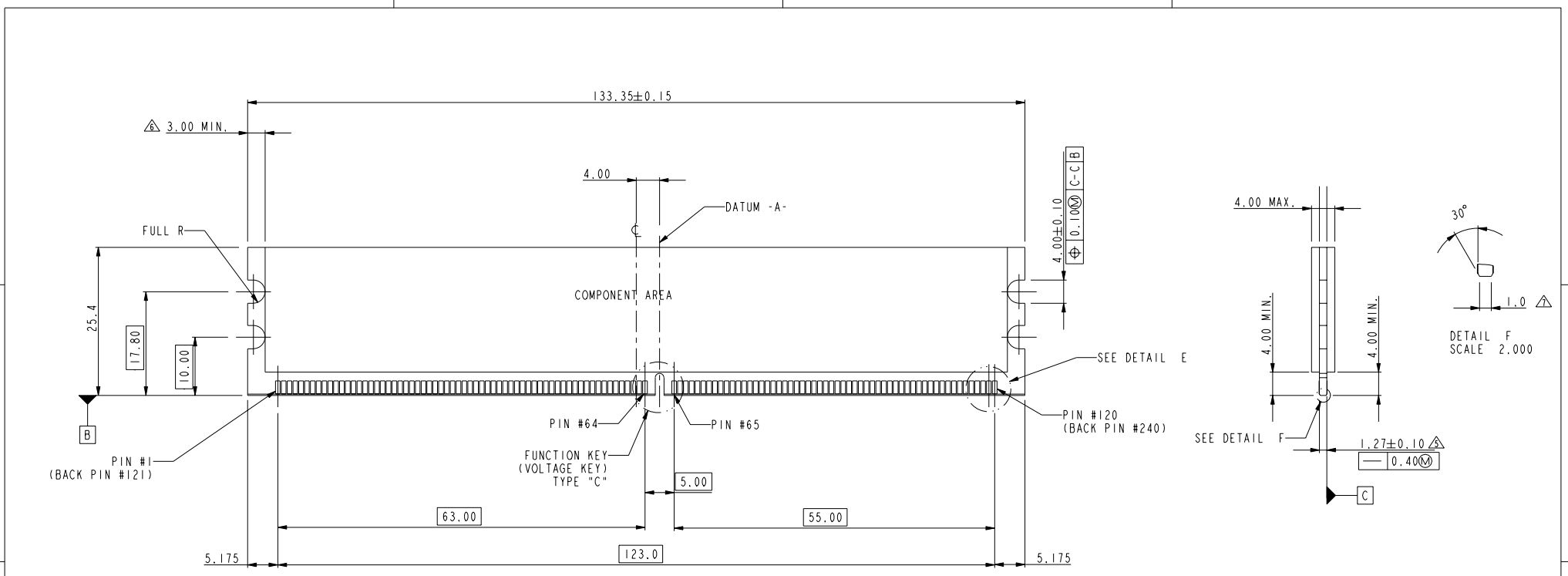
rev	ecn no	dr	date
N	DG06-0328	C S	10/08/06

Material *		Spec ref	
Mat code		✓	tolerance
Heat treat			projection
Plating/Finish			size
Dr	MAGGIE WU 02/17/03		Scale
Eng	JEFF. HSIEH 02/17/03	Product family	
Chr	JEFF. HSIEH 02/17/03	Model Name	
Appr	JENN TSAO 02/17/03	Model Revision	
FCI		REL Level	
Pro/E file	catalog	title	
PDM: Rev:N		CUSTOMER DRAWING	
STATUS: Released		sheet 1 of 4	
Printed: Jan 14, 2008		Rev. N	

tolerance unless otherwise specified	
linear	.X ± .38 .XX ± .25 .XXX ± .13
angles	0° ± 2°



This document is the property of and embodies CONFIDENTIAL and PROPRIETARY information of FCI. No part of the information shown on this document may be used in any way or disclosed to others without the written consent of FCI. Copyright FCI.



tolerance unless otherwise specified	
linear	.X ± .38
	.XX ± .25
	.XXX ± .13
angles	0° ± 2°

TYPE "R"	X.X VOLTAGE
TYPE "L"	2.5 VOLTAGE
TYPE "C"	1.8 VOLTAGE
SUB KEY POS #1	DESCRIPTION

TOLERANCES UNLESS OTHERWISE SPECIFIED					
LINEAR	0.X	±0.3	-	-	-
	0.XX	±0.15	-	-	-
	0.XXX	±0.100	-	-	-
ANGULAR	0°	±2°	-	-	-

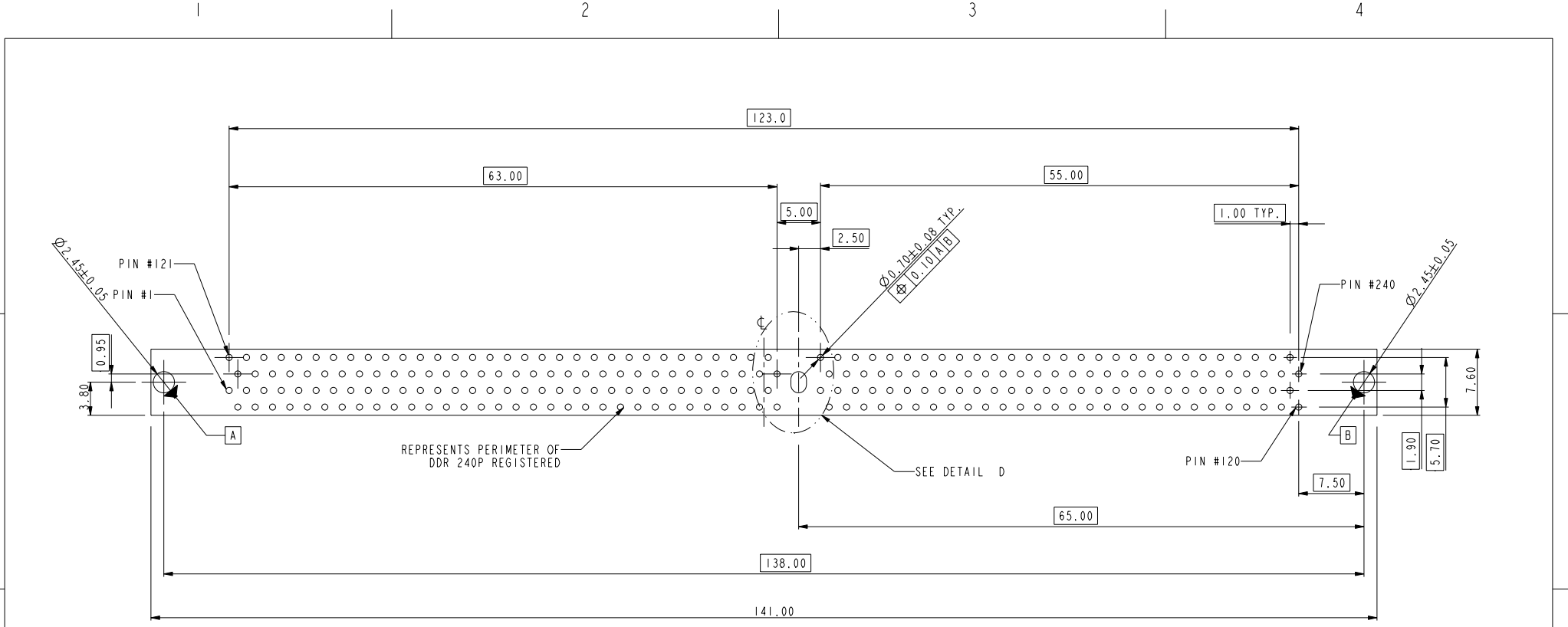
Mark with 10023061 REV. M in area indicated by X....

Material	* Spec ref *		tolerance	projection	MM
Mat code	✓				
Heat treat	Dr	MAGGIE WU	02/17/03	size	A4
Plating/Finish	Eng #	02/17/03	Product family	Scale	1.000
	Chr	JEFF HSIEH	02/17/03	Model Name	10023061
	Appr	JEFF HSIEH	02/17/03	Model Revision	I
				REL Level	CONCEPT
FCI	title	DDR II 240P V/T PLASTIC POST. ASS'Y		dwg no	10023061
Pro/E file	catalog	PDM: Rev:N		Rev.	N

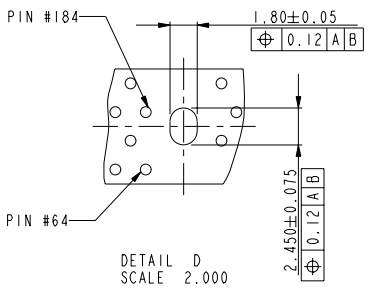
FCI CONFIDENTIAL



This document is the property of and embodies CONFIDENTIAL and PROPRIETARY information of FCI. No part of the information shown on this document may be used in any way or disclosed to others without the written consent of FCI. Copyright FCI.



RECOMMENDED CIRCUIT BOARD HOLE LAYOUT



tolerance unless otherwise specified	
linear	.X ± .38 .XX ± .25 .XXX ± .13
angles	0° ± 2°

Material	*	Spec ref	
Mat code		tolerance	projection
Heat treat		✓	MM
Plating/Finish			size A4
Dr	MAGGIE WU 02/17/03		Scale 0.500
Eng	JEFF.HSIEH 02/17/03	Product family	
Chr	JEFF.HSIEH 02/17/03	Model Name	ECN DG06-0328
Appr	JENN TSAO 02/17/03	Model Revision	REL Level

	title	DDR II 240P V/T PLASTIC POST. ASS'Y	dwg no	10023061	Rev.	N
Pro/E file	catalog	PDM: Rev:N	CUSTOMER DRAWING	sheet 3 of 4	STATUS: Released	



1 2 3 4

10023061 - □ □ □ □ □

STYLE : MECHANICAL KEYING  
 1 : 1.8 VOLT. W/ CENTER KEY#1  
 2 : 2.5 VOLT. W/ LEFT KEY#1  
 3 : X.X VOLT. W/ RIGHT KEY#1

COLOR OF HOUSING  
 0 : BLACK HOUSING  
 1 : BLUE HOUSING

TAIL LENGTH

CODE	DIM "B"
0	2.54
1	2.67
2	3.18

PLATING

CODE	CONTACT	SOLDERTAIL	UNDERPLATE
2	15u" (0.38um) MIN. GOLD	100u" (2.54um) MIN. TIN/LEAD	50u" (1.27um) MIN. NICKEL OVERALL
3	30u" (0.76um) MIN. GOLD		
4	3u" (0.076um) MIN. GOLD		
6LF	10u" (0.25um) MIN. GOLD	100u" (2.54um) MIN. 100% TIN	50u" (1.27um) MIN. NICKEL OVERALL
7LF	15u" (0.38um) MIN. GOLD		
8LF	30u" (0.76um) MIN. GOLD		
9LF	3u" (0.076um) MIN. GOLD		

COLOR OF EJECTOR  
 0 : IVORY EJECTOR  
 2 : BLACK EJECTOR

NOTES:

- MATERIAL:  
 HOUSING: HIGH PERFORMANCE RESINS, GLASS FILLED UL94V-0 RATED.  
 EJECTOR: HIGH PERFORMANCE RESINS, GLASS FILLED UL94V-0 RATED.  
 TERMINAL: PHOSPHOR BRONZE
- FCI LOGO TO BE APPROXIMATELY LOCATED AS SHOWN ON PRINT.
- PRODUCT SPECIFICATION: GS-12-251.
- PACKAGING SPECIFICATION: GS-14-899.
- CARD THICKNESS APPLIES ACROSS TABS AND INCLUDES PLATING AND/OR METALIZATION.
- 3.00mm MINIMUM APPLIES TO BOTH 4.00mm WIDE NOTCH LENGTH AND COMPONENT KEEPOUT AREA.
- LEADING EDGE OF CONTACT PADS SPECIFIED BY THE KEEP OUT ZONE SHALL BE FREE OF BURRS AND EXTERNAL TIE BARS.  
 FOR OPTIMUM PERFORMANCE, THE TIE BAR IS TO BE ON AN INTERNAL LAYER SO THAT THE REMNANT CANNOT CAUSE CONTACT DAMAGE.
- THE DATE CODE IS SHOWN "MM-DD-YY".
- THIS PRODUCT MEETS EUROPEAN UNION DIRECTIVES AND OTHER COUNTRY REGULATIONS AS DESCRIBED IN GS-22-008.
- THE HOUSING WILL WITH STAND EXPOSURE TO 260°C PEAK TEMPERATURE FOR 10 SECONDS IN A WAVE SOLDER APPLICATION.

tolerance unless otherwise specified	
linear	.X ± .38 .XX ± .25 .XXX ± .13
angles	0° ± 2°

Material *			Spec ref	
Mat code		tolerance	projection	MM
Heat treat		✓	⊕	
Plating/Finish			size	Scale
Dr	MAGGIE WU	02/17/03	A4	0.500
Eng	JEFF.HSIEH	02/17/03	Product family	
Chr	JEFF.HSIEH	02/17/03	Model Name	
Appr	JENN TSAO	02/17/03	Model Revision	
REL Level			ECN DG06-0328	
FCI			title	
Pro/E file			catalog	
title			DDR II 240P V/T PLASTIC POST. ASS'Y	
dwg no			10023061	
Rev.			N	
PDM: Rev:N			STATUS: Released	
CUSTOMER DRAWING			sheet 4 of 4	