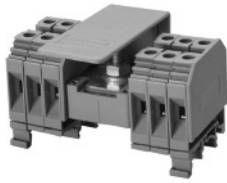
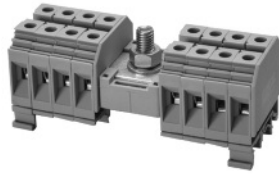


CDB6/x



CDB10/x



CDB25/x



8 mm

10 mm

12 mm

43 x 47 mm

43 x 47 mm

56 x 49 mm

12 mm

12 mm

18 mm

Polyamide 6.6

Polyamide 6.6

Polyamide 6.6

1 Lug/ M6 bolt connection for ring lug
Screw clamp connection

1 Lug/ M8 bolt connection for ring lug
Screw clamp connection

1 Lug/ M8 bolt connection for ring lug
Screw clamp connection

C SP US		C E220514		C SP US		C E220514		C SP US		C E220514	
10-2 AWG 22-8 AWG	6-25 sq.mm 1.5-6 sq.mm	10-2 AWG 22-8 AWG	10-2 AWG 22-8 AWG	8-1/0 AWG 22-6 AWG	10-35 sq.mm 1.5-10 sq.mm	8-1/0 AWG 22-6 AWG	8-1/0 AWG 22-6 AWG	6-2/0 AWG 12-2 AWG	10-50 sq.mm 6-25 sq.mm	6-2/0 AWG 12-2 AWG	6-2/0 AWG 12-2 AWG
600 V	800 V	600 V	600 V	600 V	800 V	600 V	600 V	600 V	800 V	600 V	600 V
100 A 50 A	41 A	100 A 50 A	100 A 50 A	125 A 65 A	57 A	130 A 65 A	130 A 65 A	150 A 75 A	101 A	150 A 75 A	150 A 75 A
25 lb-in 9 lb-in	3.0 Nm 0.8 Nm	35 lb-in 14 lb-in	35 lb-in 14 lb-in	53 lb-in 14 lb-in	6.0 Nm 1.2 Nm	53 lb-in 14 lb-in	53 lb-in 14 lb-in	53 lb-in 14 lb-in	6.0 Nm 2 Nm	53 lb-in 14 lb-in	53 lb-in 14 lb-in



Cat. No.	H x W x L (mm)	Outputs	Std. Pk	Cat. No.	H x W x L (mm)	Outputs	Std. Pk	Cat. No.	H x W x L (mm)	Outputs	Std. Pk
CDB6/2	43 x 47 x 64	8	10	CDB10/2	43 x 47 x 72	8	10	CDB25/2	56 x 49 x 88	8	10
CDB6/3	43 x 47 x 80	12	10	CDB10/3	43 x 47 x 92	12	10	CDB25/3	56 x 49 x 112	12	10
CDB6/4	43 x 47 x 96	16	5	CDB10/4	43 x 47 x 112	16	5	CDB25/4	56 x 49 x 136	16	5

Cat. No.	Std. Pk.	Cat. No.	Std. Pk.	Cat. No.	Std. Pk.
CA702 CA802	50 50	CA702 CA802	50 50	CA702 CA802	50 50
MT8	100	MT10	100	MT12	100
SWL6	100				