

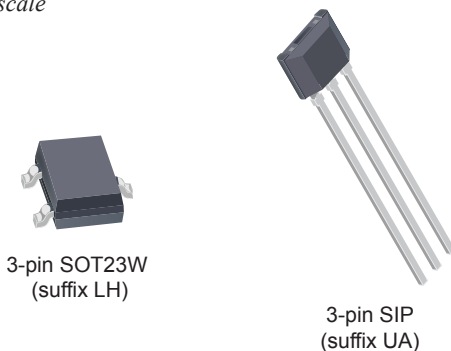
High-Temperature Chopper-Stabilized Precision Hall-Effect Latches for 5 V Applications

FEATURES AND BENEFITS

- Optimized for applications with regulated power rails
 - Operation from 2.8 to 5.5 V
- AEC-Q100 automotive qualified
- Operation up to 175°C junction temperature
- Dynamic offset cancellation
 - Resistant to physical stress
 - Superior temperature stability
- Symmetrical latch switchpoints
- Output short-circuit protection
- Solid-state reliability
- Industry-standard packages and pinouts

PACKAGES:

Not to scale



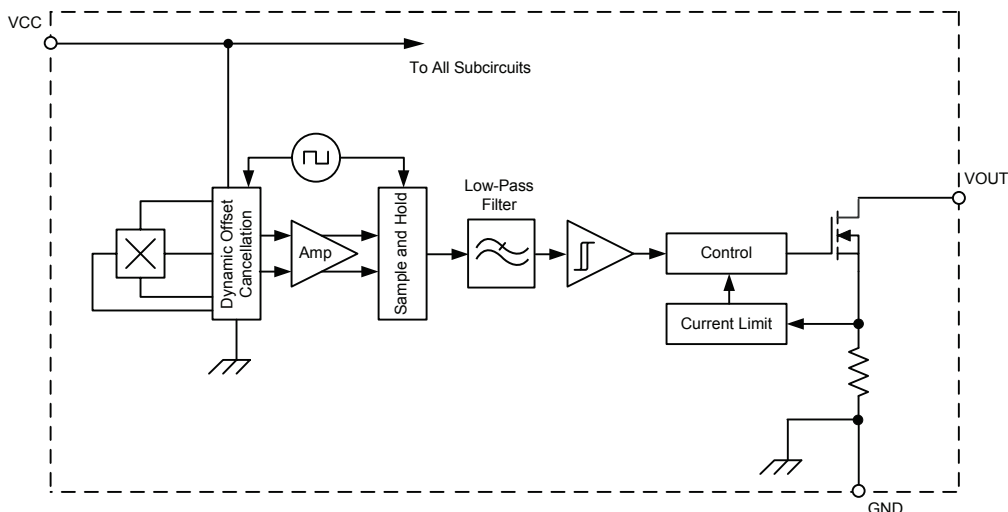
DESCRIPTION

The APS12205, APS12215, and APS12235 Hall-effect sensor ICs are extremely temperature-stable and stress-resistant devices especially suited for operation over extended junction temperature ranges up to 175°C. Superior high-temperature performance is made possible through dynamic offset cancellation, which reduces the residual offset voltage normally caused by device overmolding, temperature dependencies, and thermal stress.

The single silicon chip includes: a Hall plate, small signal amplifier, chopper stabilization, Schmitt trigger, and a short-circuit-protected open-drain output to sink up to 10 mA. A south pole of sufficient strength turns the output on; a north pole of sufficient strength is necessary to turn the output off. For applications requiring operation from greater than 5.5 V or operation directly from a battery, refer to the A1220, A1221, or A1223.

Two package styles provide a choice of through-hole or surface mounting. Package type LH is a modified 3-pin SOT23W surface-mount package, while UA is a three-pin ultramini SIP for through-hole mounting. Both packages are lead (Pb) free, with 100% matte-tin-plated leadframes.

Functional Block Diagram



SPECIFICATIONS

SELECTION GUIDE

| Part Number | Packing ¹ | Mounting | Branding | Ambient, T _A | B _{RP} (Min) | B _{OP} (Max) |
|-------------------------------|--------------------------------|----------------------------|----------|-------------------------|-----------------------|-----------------------|
| APS12205LLHALX | 13-in. reel, 10000 pieces/reel | 3-pin SOT23W surface mount | A04 | –40°C to 150°C | –40 G | 40 G |
| APS12205LLHALT ² | 7-in. reel, 3000 pieces/reel | 3-pin SOT23W surface mount | A04 | | | |
| APS12205LUAA | Bulk, 500 pieces/bag | 3-pin SIP through hole | A18 | | | |
| APS12215LLHALX | 13-in. reel, 10000 pieces/reel | 3-pin SOT23W surface mount | A01 | –40°C to 150°C | –90 G | 90 G |
| APS12215LLHALT ² | 7-in. reel, 3000 pieces/reel | 3-pin SOT23W surface mount | A01 | | | |
| APS12215LUAA | Bulk, 500 pieces/bag | 3-pin SIP through hole | A03 | | | |
| APS12235LLHALX ³ | 13-in. reel, 10000 pieces/reel | 3-pin SOT23W surface mount | A35 | –40°C to 150°C | –180 G | 180 G |
| APS12235LLHALT ^{2,3} | 7-in. reel, 3000 pieces/reel | 3-pin SOT23W surface mount | A35 | | | |
| APS12235LUAA ³ | Bulk, 500 pieces/bag | 3-pin SIP through hole | A36 | | | |

¹ Contact Allegro for additional packing options.

² Available through authorized Allegro distributors only.

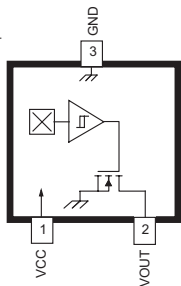
³ Contact Allegro for availability.



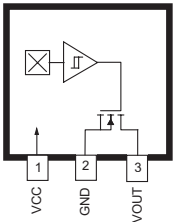
ABSOLUTE MAXIMUM RATINGS

| Characteristic | Symbol | Notes | Rating | Units |
|------------------------------|----------------------|---------------|------------|-------|
| Forward Supply Voltage | V _{CC} | | 6 | V |
| Reverse Supply Voltage | V _{RCC} | | –0.3 | V |
| Output Off Voltage | V _{OUT} | | 6 | V |
| Continuous Output Current | I _{OUT} | | 10 | mA |
| Maximum Junction Temperature | T _J (max) | | 165 | °C |
| | | For 500 hours | 175 | °C |
| Storage Temperature | T _{stg} | | –65 to 170 | °C |

PINOUT DIAGRAMS AND TERMINAL LIST TABLE



Package LH



Package UA

Terminal List

| Name | Description | Number | |
|------|-------------------------------|------------|------------|
| | | Package LH | Package UA |
| VCC | Connects power supply to chip | 1 | 1 |
| VOUT | Output from circuit | 2 | 3 |
| GND | Ground | 3 | 2 |

ELECTRICAL CHARACTERISTICS: Valid over full operating voltage and $T_A = -40^{\circ}\text{C}$ to 150°C , unless otherwise noted

| Characteristics | Symbol | Test Conditions | Min. | Typ. ¹ | Max. | Unit ² |
|-------------------------------------|----------------|---|------|-------------------|------|-------------------|
| ELECTRICAL CHARACTERISTICS | | | | | | |
| Forward Supply Voltage | V_{CC} | Operating, $T_J < 175^{\circ}\text{C}$ | 2.8 | – | 5.5 | V |
| Supply Current | $I_{CC(ON)}$ | $V_{CC} = 5.5\text{ V}$, $B > B_{OP}$ | – | – | 4 | mA |
| | $I_{CC(OFF)}$ | $V_{CC} = 5.5\text{ V}$, $B < B_{RP}$ | – | – | 4 | mA |
| Output Leakage Current | I_{OUTOFF} | $V_{OUT} = 5.5\text{ V}$, $B < B_{RP}$ | – | – | 10 | μA |
| Output Saturation Voltage | $V_{OUT(SAT)}$ | $I_{OUT} = 5\text{ mA}$, $B > B_{OP}$ | – | – | 500 | V |
| Output Off Voltage | V_{OUTOFF} | $B < B_{RP}$ | – | – | 6 | V |
| Output Short-Circuit Current Limit | I_{OM} | | 30 | – | 60 | mA |
| Power-On Time ³ | t_{PO} | $V_{CC} \geq 2.8\text{ V}$, $B < B_{RP(min)} - 10\text{ G}$, $B > B_{OP(max)} + 10\text{ G}$ | – | – | 25 | μs |
| Power-On State, Output ³ | POS | $V_{CC} \geq V_{CC(min)}$, $t < t_{ON}$ | Low | | | – |
| Chopping Frequency | f_C | | – | 800 | – | kHz |
| Output Rise Time ^{3,4} | t_r | $R_L = 1\text{ k}\Omega$, $C_L = 20\text{ pF}$ | – | 0.2 | 2 | μs |
| Output Fall Time ^{3,4} | t_f | $R_L = 1\text{ k}\Omega$, $C_L = 20\text{ pF}$ | – | 0.1 | 2 | μs |
| MAGNETIC CHARACTERISTICS | | | | | | |
| Operate Point | B_{OP} | APS12205 | 5 | 22 | 40 | G |
| | | APS12215 | 15 | 50 | 90 | G |
| | | APS12235 | 100 | 150 | 180 | G |
| Release Point | B_{RP} | APS12205 | –40 | –22 | –5 | G |
| | | APS12215 | –90 | –50 | –15 | G |
| | | APS12235 | –180 | –150 | –100 | G |
| Hysteresis | B_{HYS} | APS12205 | 10 | 45 | 80 | G |
| | | APS12215 | 30 | 100 | 180 | G |
| | | APS12235 | 200 | 300 | 360 | G |

¹ Typical data are at $T_A = 25^{\circ}\text{C}$ and $V_{CC} = 5\text{ V}$, and are for initial design estimations only.

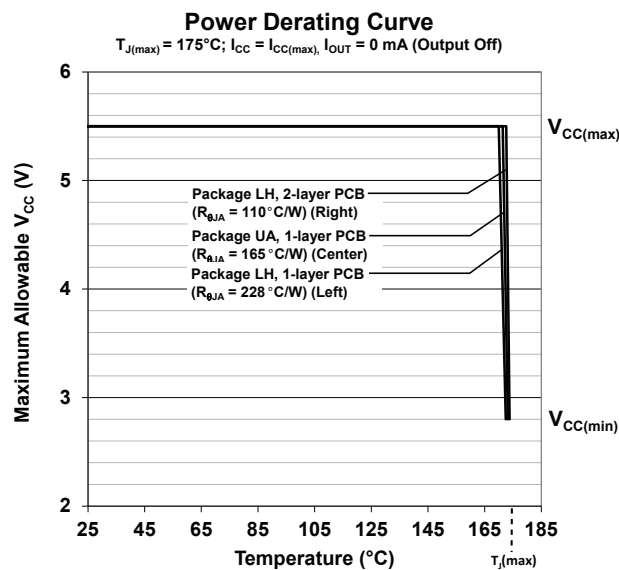
² 1 G (gauss) = 0.1 mT (millitesla).

³ Guaranteed by device design and characterization.

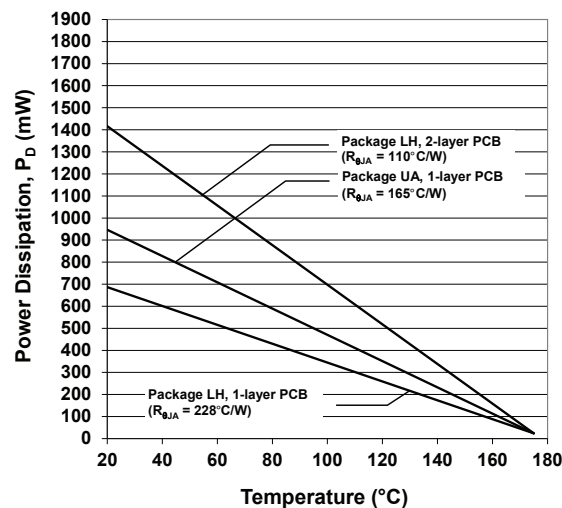
⁴ C_L = oscilloscope probe capacitance.

THERMAL CHARACTERISTICS: May require derating at maximum conditions; see application information

| Characteristic | Symbol | Test Conditions | Value | Units |
|----------------------------|-----------------|---|-------|-------|
| Package Thermal Resistance | $R_{\theta JA}$ | Package LH, 1-layer PCB with copper limited to solder pads | 228 | °C/W |
| | | Package LH, 2-layer PCB with 0.463 in ² of copper area each side connected by thermal vias | 110 | °C/W |
| | | Package UA, 1-layer PCB with copper limited to solder pads | 165 | °C/W |



Package Power Dissipation versus Ambient Temperature



FUNCTIONAL DESCRIPTION

OPERATION

The output of these devices switches low (turns on) when a magnetic field perpendicular to the Hall element exceeds the operate point threshold, B_{OP} (see Figure 1). After turn-on, the output voltage is $V_{OUT(SAT)}$. The output transistor is capable of continuously sinking up to 10 mA, as noted in the Absolute Maximum Ratings specification table. When the magnetic field is reduced below the release point, B_{RP} , the device output goes high (turns off). The difference in the magnetic operate and release points is the hysteresis, B_{HYS} , of the device. This built-in hysteresis allows clean switching of the output even in the presence of external mechanical vibration and electrical noise.

Removal of the magnetic field will leave the device output latched on if the last crossed switchpoint is B_{OP} , or latched off if the last crossed switchpoint is B_{RP} .

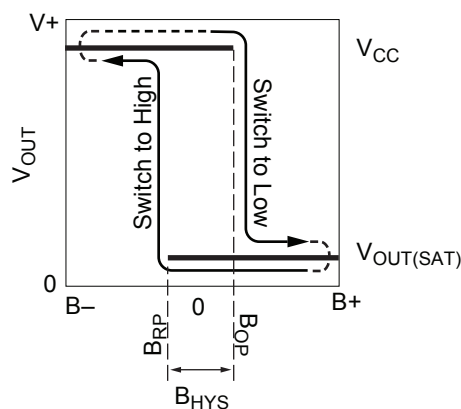


Figure 1: Switching Behavior of Latches

On the horizontal axis, the B+ direction indicates increasing south polarity magnetic field strength, and the B- direction indicates decreasing south polarity field strength (including the case of increasing north polarity).

POWER-ON BEHAVIOR

Device power-on occurs once t_{ON} has elapsed. During the time prior to t_{ON} , and after $V_{CC} > V_{CC(min)}$, the output state is $V_{OUT(SAT)}(Low)$. After t_{ON} has elapsed, the output will correspond with the applied magnetic field for $B > B_{OP}$ or $B < B_{RP}$. See Figure 2 for an example.

Powering-on the device in the hysteresis range (less than B_{OP} and higher than B_{RP}) will give an output state of $V_{OUT(SAT)}$. The correct state is attained after the first excursion beyond B_{OP} or B_{RP} .

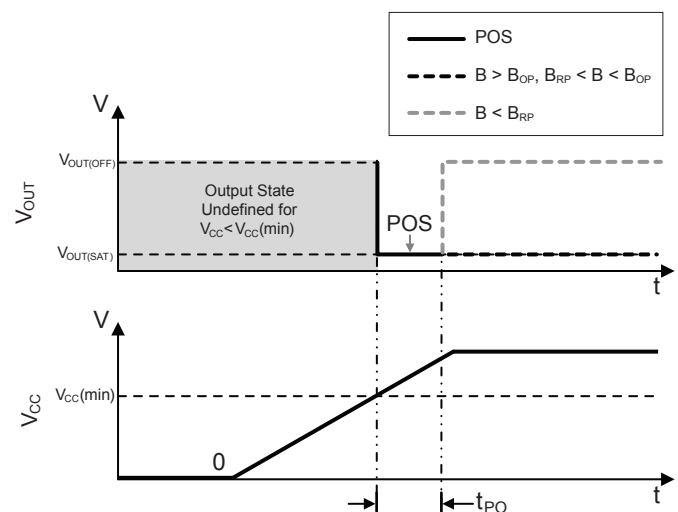


Figure 2: Power-On Timing Diagram

APPLICATIONS

It is strongly recommended that an external bypass capacitor be connected (in close proximity to the Hall element) between the supply and ground of the device to reduce both external noise and noise generated by the chopper stabilization technique. As is shown in Figure 3, a 0.1 μF capacitor is typical.

Extensive applications information on magnets and Hall-effect sensors is available in:

- *Hall-Effect IC Applications Guide, AN27701,*
- *Hall-Effect Devices: Guidelines for Designing Subassemblies Using Hall-Effect Devices AN27703.1*
- *Soldering Methods for Allegro's Products – SMD and Through-Hole, AN26009*

All are provided on the Allegro website:

www.allegromicro.com

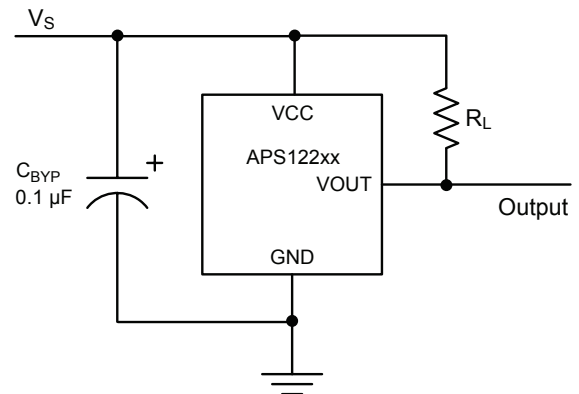


Figure 3: Typical Application Circuit

CHOPPER STABILIZATION

A limiting factor for switchpoint accuracy when using Hall-effect technology is the small signal voltage developed across the Hall plate. This voltage is proportionally small relative to the offset that can be produced at the output of the Hall sensor. This makes it difficult to process the signal and maintain an accurate, reliable output over the specified temperature and voltage range. Chopper stabilization is a proven approach used to minimize Hall offset.

The Allegro patented technique, dynamic quadrature offset cancellation, removes key sources of the output drift induced by temperature and package stress. This offset reduction technique is based on a signal modulation-demodulation process. Figure 4 illustrates how it is implemented.

The undesired offset signal is separated from the magnetically induced signal in the frequency domain through modulation. The subsequent demodulation acts as a modulation process for the

offset, causing the magnetically induced signal to recover its original spectrum at baseband while the DC offset becomes a high-frequency signal. Then, using a low-pass filter, the signal passes while the modulated DC offset is suppressed. Allegro's innovative chopper stabilization technique uses a high-frequency clock. The high-frequency operation allows a greater sampling rate that produces higher accuracy, reduced jitter, and faster signal processing. Additionally, filtering is more effective and results in a lower noise analog signal at the sensor output. Devices such as the APS12205, APS12215, and APS12235 that use this approach have an extremely stable quiescent Hall output voltage, are immune to thermal stress, and have precise recoverability after temperature cycling. This technique is made possible through the use of a BiCMOS process which allows the use of low offset and low noise amplifiers in combination with high-density logic and sample-and-hold circuits.

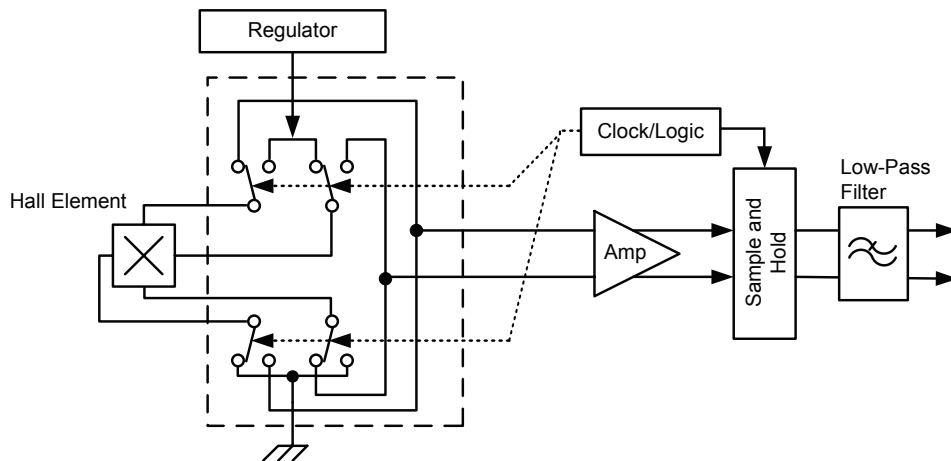


Figure 4: Model of Chopper Stabilization
(Dynamic Offset Cancellation)

POWER DERATING

The device must be operated below the maximum junction temperature of the device, $T_J(\text{max})$. Under certain combinations of peak conditions, reliable operation may require derating supplied power or improving the heat dissipation properties of the application. This section presents a procedure for correlating factors affecting operating T_J . (Thermal data is also available on the Allegro MicroSystems website.)

The Package Thermal Resistance, $R_{\theta JA}$, is a figure of merit summarizing the ability of the application and the device to dissipate heat from the junction (die), through all paths to the ambient air. Its primary component is the Effective Thermal Conductivity, K , of the printed circuit board, including adjacent devices and traces. Radiation from the die through the device case, $R_{\theta JC}$, is relatively small component of $R_{\theta JA}$. Ambient air temperature, T_A , and air motion are significant external factors, damped by overmolding.

The resulting power dissipation capability directly reflects upon the ability of the device to withstand extreme operating conditions. The junction temperature mission profile specified in the Absolute Maximum Ratings table designates a total operating life capability based on qualification for the most extreme conditions, where T_J may reach 175°C.

The silicon IC is heated internally when current is flowing into the VCC terminal. When the output is on, current sinking into the VOUT terminal generates additional heat. This may increase the junction temperature, T_J , above the surrounding ambient temperature. The APS12205, APS12215, and APS12235 are permitted to operate up to $T_J = 175^\circ\text{C}$. As mentioned above, an operating device will increase T_J according to equations 1, 2, and 3 below. This allows an estimation of the maximum ambient operating temperature.

$$P_D = V_{IN} \times I_{IN} \quad (1)$$

$$\Delta T = P_D \times R_{\theta JA} \quad (2)$$

$$T_J = T_A + \Delta T \quad (3)$$

For example, given common conditions such as: $T_A = 25^\circ\text{C}$, $V_{CC} = 5\text{ V}$, $I_{CC} = 2.5\text{ mA}$, $V_{OUT} = 185\text{ mV}$, $I_{OUT} = 2\text{ mA}$ (output on), and $R_{\theta JA} = 165^\circ\text{C/W}$, then:

$$\begin{aligned} P_D &= (V_{CC} \times I_{CC}) + (V_{OUT} \times I_{OUT}) = \\ &= (5\text{ V} \times 2.5\text{ mA}) + (185\text{ mV} \times 2\text{ mA}) = \\ &= 12.5\text{ mW} + 0.4\text{ mW} = 12.9\text{ mW} \end{aligned}$$

$$\Delta T = P_D \times R_{\theta JA} = 12.9\text{ mW} \times 165^\circ\text{C/W} = 2.1^\circ\text{C}$$

$$T_J = T_A + \Delta T = 25^\circ\text{C} + 2.1^\circ\text{C} = 27.1^\circ\text{C}$$

A worst-case estimate, $P_D(\text{max})$, represents the maximum allowable power level ($V_{CC}(\text{max})$, $I_{CC}(\text{max})$), without exceeding $T_J(\text{max})$, at a selected $R_{\theta JA}$.

For example, given the conditions $R_{\theta JA} = 228^\circ\text{C/W}$, $T_J(\text{max}) = 175^\circ\text{C}$, $V_{CC}(\text{max}) = 5.5\text{ V}$, $I_{CC}(\text{max}) = 4\text{ mA}$, $V_{OUT} = 500\text{ mV}$, and $I_{OUT} = 10\text{ mA}$ (output on), the maximum allowable operating ambient temperature can be determined.

The power dissipation required for the output is shown below:

$$P_D(V_{OUT}) = V_{OUT} \times I_{OUT} = 500\text{ mV} \times 10\text{ mA} = 5\text{ mW}$$

The power dissipation required for the IC supply is shown below:

$$P_D(V_{CC}) = V_{CC} \times I_{CC} = 5.5\text{ V} \times 4\text{ mA} = 22\text{ mW}$$

Next, by inverting using equation 2:

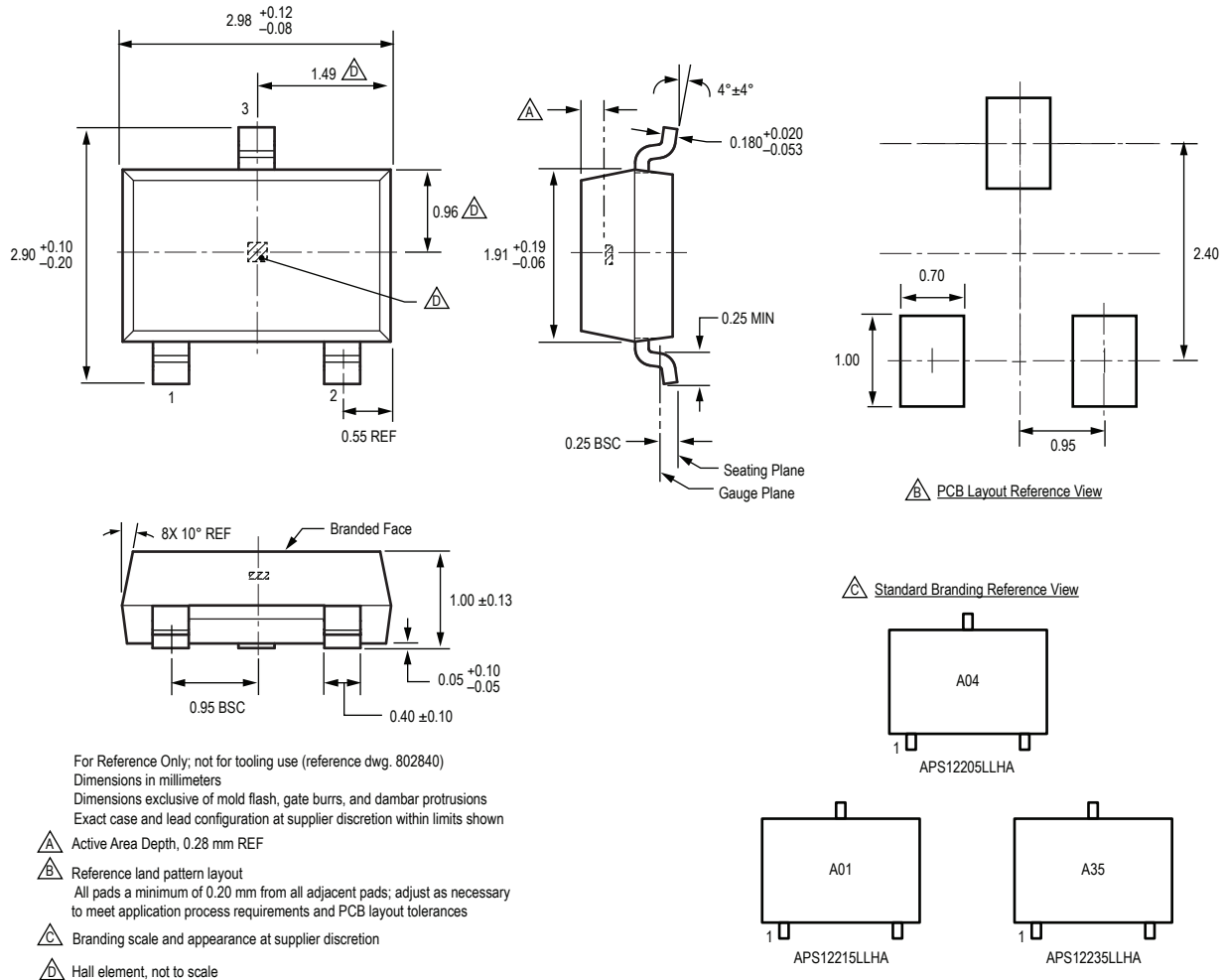
$$\begin{aligned} \Delta T &= P_D \times R_{\theta JA} = [P_D(V_{OUT}) + P_D(V_{CC})] \times 228^\circ\text{C/W} = \\ &= (5\text{ mW} + 22\text{ mW}) \times 228^\circ\text{C/W} = \\ &= 27\text{ mW} \times 228^\circ\text{C/W} = 6.2^\circ\text{C} \end{aligned}$$

Finally, by inverting equation 3 with respect to voltage:

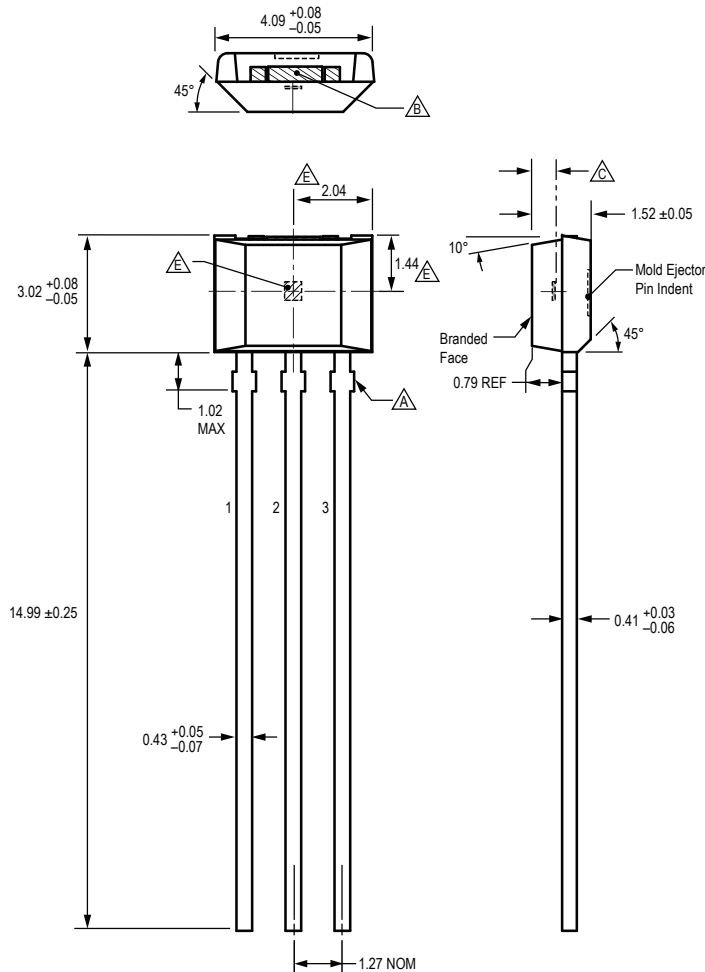
$$T_A(\text{est}) = T_J(\text{max}) - \Delta T = 175^\circ\text{C} - 6.2^\circ\text{C} = 168.8^\circ\text{C}$$

In the above case there is only sufficient power dissipation capability to operate up to $T_A(\text{est})$. This particular result indicates that, at $T_J(\text{max})$, the application and device can only dissipate adequate amounts of heat at ambient temperatures $\leq T_A(\text{est})$.

Package LH, 3-Pin (SOT-23W)



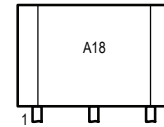
Package UA, 3-Pin SIP



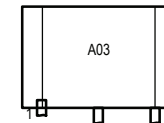
For Reference Only; not for tooling use (reference DWG-9065)
Dimensions in millimeters
Dimensions exclusive of mold flash, gate burrs, and dambar protrusions
Exact case and lead configuration at supplier discretion within limits shown

- Dambar removal protrusion (6X)
- Gate and tie bar burr area
- Active Area Depth, 0.50 mm REF
- Branding scale and appearance at supplier discretion
- Hall element (not to scale)

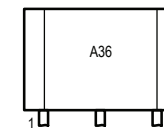
Standard Branding Reference View



APS12205LUA



APS12215LUA



APS12235LUA

Revision History

| Number | Date | Description |
|--------|---------------|--|
| – | June 3, 2016 | Initial release |
| 1 | June 20, 2016 | Updated Functional Block Diagram (page 1); Updated Selection Guide (page 2) and package outline drawing brand information (pages 10-11). |

Copyright ©2016, Allegro MicroSystems, LLC

Allegro MicroSystems, LLC reserves the right to make, from time to time, such departures from the detail specifications as may be required to permit improvements in the performance, reliability, or manufacturability of its products. Before placing an order, the user is cautioned to verify that the information being relied upon is current.

Allegro's products are not to be used in any devices or systems, including but not limited to life support devices or systems, in which a failure of Allegro's product can reasonably be expected to cause bodily harm.

The information included herein is believed to be accurate and reliable. However, Allegro MicroSystems, LLC assumes no responsibility for its use; nor for any infringement of patents or other rights of third parties which may result from its use.

For the latest version of this document, visit our website:
www.allegromicro.com

